

Name: \_\_\_\_\_

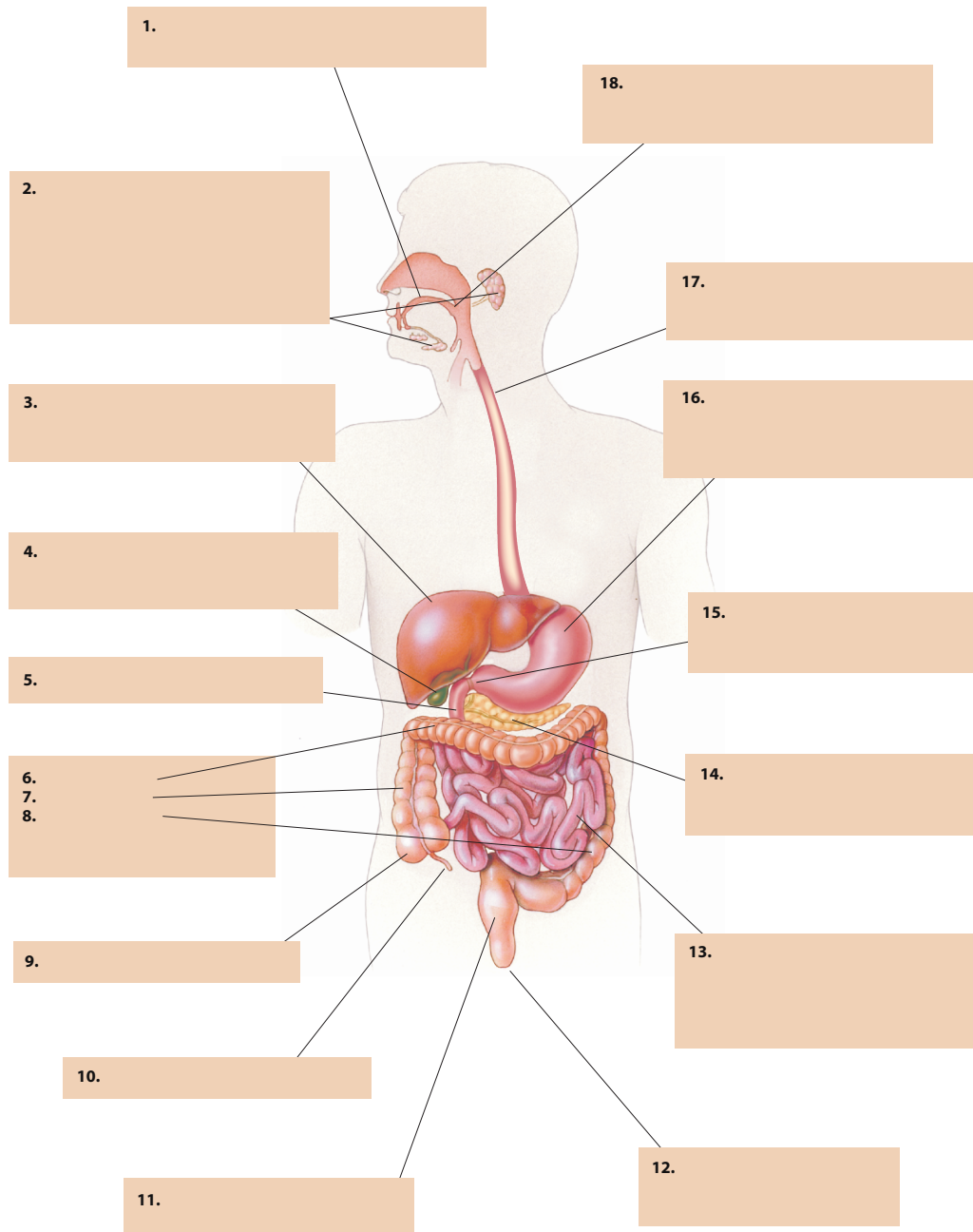
Class: \_\_\_\_\_

**WORKSHEET**

# Chapter 9.1 The digestive system

Using the information in Chapter 7 of *Human Perspectives Units 1 & 2* and other sources available to you, complete the following activities.

- 1 Label the following diagram of the digestive system and fill in the table on the following page. In **green** pencil, trace the pathway of food through the system. In **blue** pencil, indicate where there is an 'input' of enzymes to assist with chemical digestion.



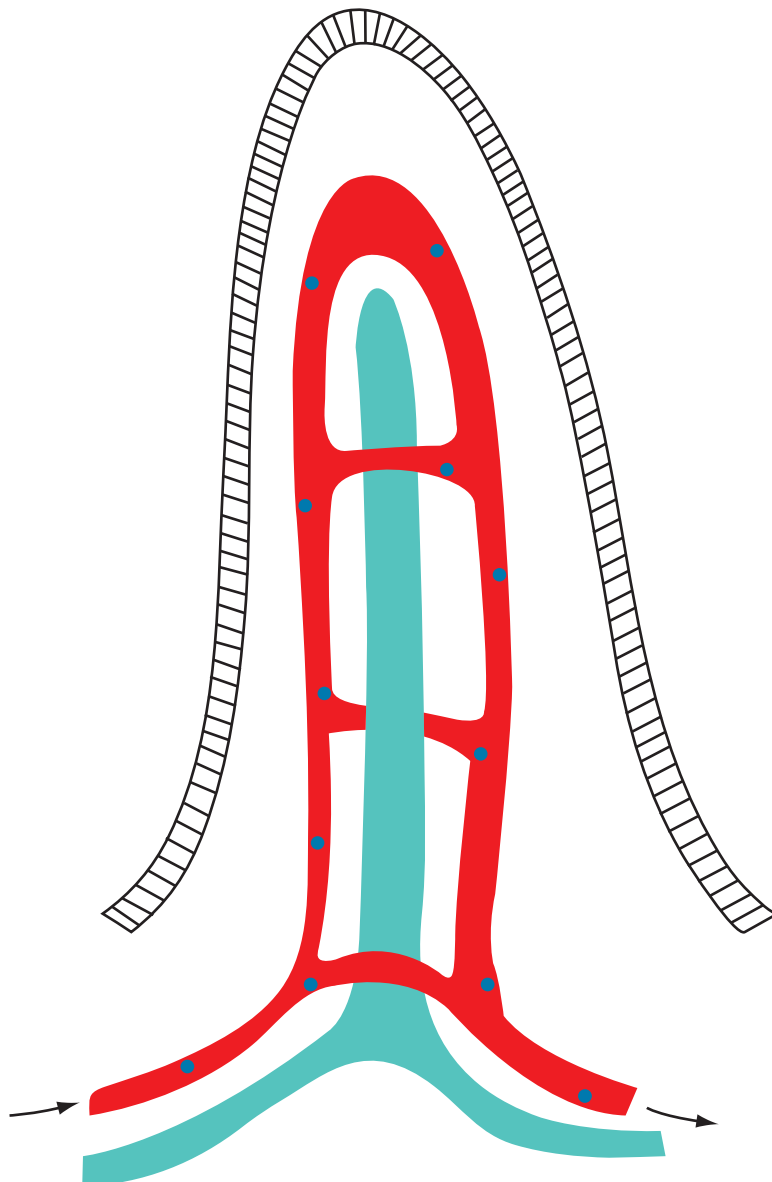
Number on diagram	Name of structure	Function
1		
2		
3		
4		
5		
6		
7		
8		
9		
10		

11		
12		
13		
14		
15		
16		
17		
18		

## How the structure of the villus is related to its role in absorption of the end products of digestion

The structure of the small intestine is specially adapted for absorption to occur efficiently. It has many folds, which help increase the surface area. The lining is covered in tiny projections called villi (singular villus). The villi increase the surface area even more making absorption even more efficient.

Using Figure 9.11 in the textbook to help you, label this simplified diagram of a villus. Indicate on the diagram where fats and fat-soluble vitamins are absorbed, and where nutrients such as glucose, amino acids and water-soluble vitamins are absorbed.



2 Complete the table below by briefly describing any mechanical and/or chemical digestion that occurs in the organs listed.

	Mechanical	Chemical
Mouth		
Stomach		
Small intestine		
Large intestine		